

LAND OVERVIEW

Total Acreage:	6.0 Acres (approximately)
Topography:	Flat
Previous Use:	Agricultural
Current Zoning:	BP - 2
Water/Sewer:	Available at Moorland

FEATURES

- Located in the heart of the Muskego retail corridor
- Direct access to site from Moorland Road
- Convenient access, just minutes from I-43
- Vibrant growing area in southeastern Waukesha County
- There is vacant land adjacent to the east and north of the site that may be available if additional land is necessary for a proposed development

ECONOMICS

Tax Key:	Part of MSKC-2172999
Tax Mill Rate:	\$16.39 per \$1,000 (2016)
Price per Acre:	\$300,000 per acre

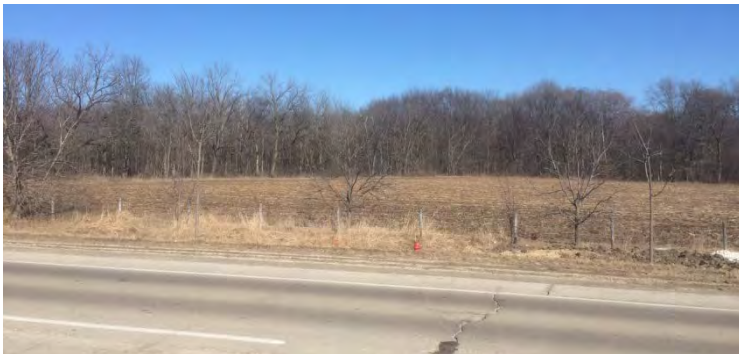
Dave Ferron
Commercial Real Estate Broker
414.203.3015
dferron@boerke.com

Kevin Riordan
Principal
414.203.3022
kriordan@boerke.com

Bill Carly
Carly Land Corp.
262.785.1968
carlyland@sbcglobal.net

731 N. Jackson Street
Suite 700
Milwaukee, WI 53202
Main: 414.347.1000
boerke.com

TOPOGRAPHICAL MAP AND SITE VIEWS



Dave Ferron
Commercial Real Estate Broker
414.203.3015
dferron@boerke.com

Kevin Riordan
Principal
414.203.3022
kriordan@boerke.com

Bill Carly
Carly Land Corp.
262.785.1968
carlyland@sbcglobal.net

731 N. Jackson Street
Suite 700
Milwaukee, WI 53202
Main: 414.347.1000
boerke.com

RETAIL MAP WITH TRAFFIC COUNTS



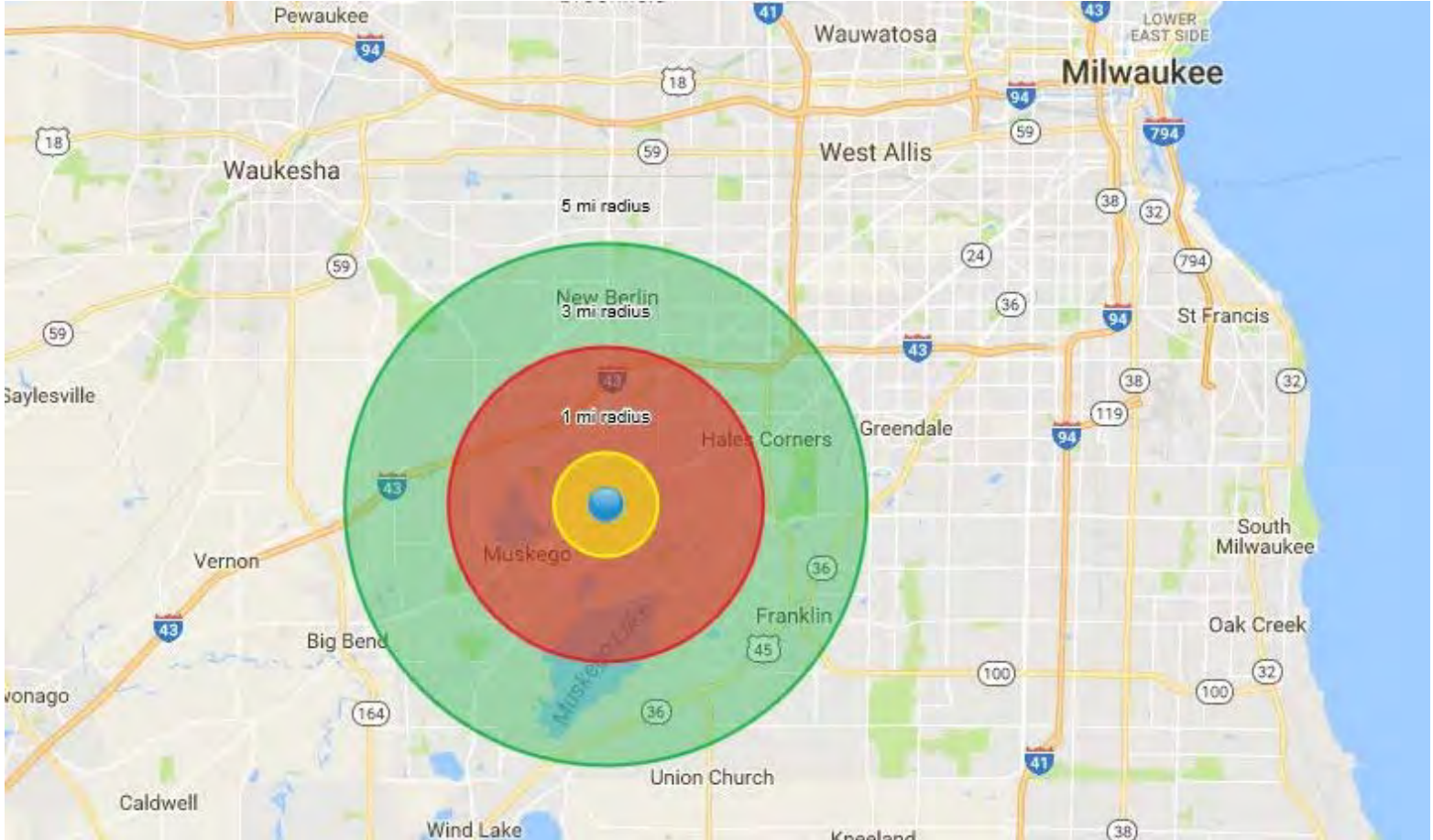
Dave Ferron
 Commercial Real Estate Broker
 414.203.3015
 dferron@boerke.com

Kevin Riordan
 Principal
 414.203.3022
 kriordan@boerke.com

Bill Carly
Carly Land Corp.
 262.785.1968
 carlyland@sbcglobal.net

731 N. Jackson Street
 Suite 700
 Milwaukee, WI 53202
 Main: 414.347.1000
 boerke.com

DEMOGRAPHICS



	1 MILE	3 MILES	5 MILES
POPULATION			
ESTIMATED POPULATION (2016)	4,568	31,482	80,743
MEDIAN AGE	42.8	44	44.5
HOUSEHOLDS			
ESTIMATED HOUSEHOLDS (2016)	1,755	12,417	33,411
ESTIMATED AVERAGE HOUSEHOLD INCOME	\$100,452	\$102,475	\$100,998
TOTAL ANNUAL CONSUMER EXPENDITURE			
TOTAL RETAIL EXPENDITURE	56.8 M	404 M	1.08 B
APPAREL EXPENDITURE	4.38 M	31.2 M	83 M
ENTERTAINMENT EXPENDITURE	7.12 M	50.6 M	135 M
FOOD & BEVERAGE EXPENDITURE	18 M	127 M	341 M

Dave Ferron
Commercial Real Estate Broker
414.203.3015
dferron@boerke.com

Kevin Riordan
Principal
414.203.3022
kriordan@boerke.com

Bill Carly
Carly Land Corp.
262.785.1968
carlyland@sbcglobal.net

731 N. Jackson Street
Suite 700
Milwaukee, WI 53202
Main: 414.347.1000
boerke.com



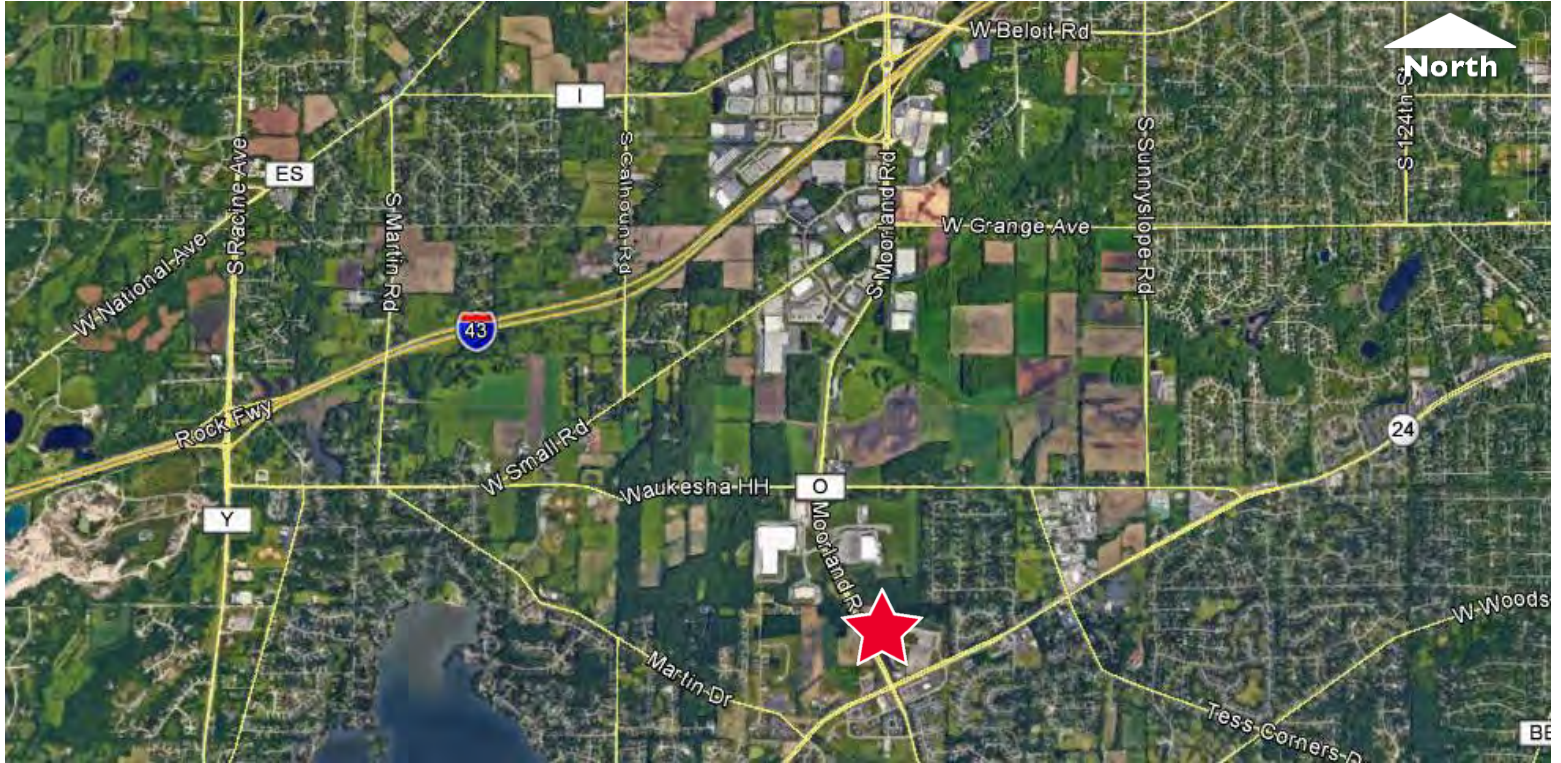
BOERKE

FOR SALE

COMMERCIAL DEVELOPMENT LAND

Moorland North of Janesville Road
Muskego, WI 53150

MAPS



Dave Ferron
Commercial Real Estate Broker
414.203.3015
dferron@boerke.com

Kevin Riordan
Principal
414.203.3022
kriordan@boerke.com

Bill Carly
Carly Land Corp.
262.785.1968
carlyland@sbcglobal.net

731 N. Jackson Street
Suite 700
Milwaukee, WI 53202
Main: 414.347.1000
boerke.com

The Boerke Company, Inc. / Independently Owned and Operated / A Member of the Cushman & Wakefield Alliance
Cushman & Wakefield Copyright 2017. No warranty or representation, express or implied, is made to the accuracy or completeness of the information contained herein, and same is submitted subject to errors, omissions, change of price, rental or other conditions, withdrawal without notice, and to any special listing conditions imposed by the property owner(s). As applicable, we make no representation as to the condition of the property (or properties) in question.

STATE OF WISCONSIN BROKER DISCLOSURE To Non-Residential Customers

Wisconsin Law requires all real estate licensees to give the following information about brokerage services to prospective customer

Prior to negotiating on your behalf the Broker must provide you the following disclosure statement:

BROKER DISCLOSURE TO CUSTOMERS

You are the customer of the broker. The broker is either an agent of another party in the transaction or a subagent of another broker who is the agent of another party in the transaction. The broker, or a salesperson acting on the behalf of the broker, may provide brokerage services to you.

Whenever the broker is providing brokerage services to you, the broker owes you, the customer, the following duties:

- *The duty to prove brokerage services to you fairly and honestly.*
- *The duty to exercise reasonable skill and care in providing brokerage services to you.*
- *The duty to provide you with accurate information about market conditions within a reasonable time if you request it, unless disclosure of the information is prohibited by law.*
- *The duty to disclose to you in writing certain material adverse facts about a property, unless disclosure of the information is prohibited by law (see "Definition of Material Adverse Facts" below).*
- *The duty to protect your confidentiality. Unless the law requires it, the broker will not disclose your confidential information of other parties.*
- *The duty to safeguard trust funds and other property the broker holds.*
- *The duty, when negotiating, to present contract proposals in an objective and unbiased manner and disclose the advantages and disadvantages of the proposals.*

Please review this information carefully. A broker or salesperson can answer your questions about brokerage services, but if you need legal advice, tax advice, or a professional home inspection, contact an attorney, tax advisor, or home inspector.

This disclosure is required by section 452.135 of the Wisconsin Statutes and is for information only. It is a plain language summary of a broker's duties to a customer under section 452.133 (1) of the Wisconsin Statutes.

CONFIDENTIALITY NOTICE TO CUSTOMERS

Broker will keep confidential any information given to broker in confidence, or any information obtained by broker that he or she knows a reasonable person would want to be kept confidential by law, or you authorize the broker to disclose particular information. A broker shall continue to keep the information confidential after broker is no longer providing brokerage services to you.

No representation is made as to the legal validity of any provision or the adequacy of any provision on any specific transaction.

The following information is required to be disclosed by law.

1. Material adverse facts, as defined in section 452.01 (5g) of the Wisconsin statutes (see "definition of material adverse facts" below).
2. Any facts known by the broker that contradict any information included in a written inspection report on the property or real estate that is the subject of the transaction. To ensure that the broker is aware of what specific information below. At a later time, you may also provide the broker with other information that you consider to be confidential.

CONFIDENTIAL INFORMATION:

NON-CONFIDENTIAL INFORMATION (The following information may be disclosed by Broker):

(INSERT INFORMATION YOU AUTHORIZE THE BROKER TO DISCLOSE SUCH AS FINANCIAL QUALIFICATION INFORMATION)

CONSENT TO TELEPHONE SOLICITATION

I/We agree that the Broker and any affiliated settlement service providers (for example, a mortgage company or title company) may call our/my home or cell phone numbers regarding issues, goods and services related to the real estate transaction until I/we withdraw this consent in writing. List Home/Cell Numbers

SEX OFFENDER REGISTRY

Notice: You may obtain information about the sex offender registry and persons registered with the registry by contacting the Wisconsin Department of Corrections on the internet at <http://offender.doc.state.wi.us/public/> or by phone at 608-240-5830.

DEFINITION OF MATERIAL ADVERSE FACTS

A "material adverse fact" is defined in Wis. Stat. 452.01 (5g) as an adverse fact that a party indicates is of such significance, or that is generally recognized by a competent licensee as being of such significance to a reasonable party that it affects or would affect the party's decision to enter into a contract or agreement concerning a transaction or affects or would affect the party's decision about the terms of such a contract or agreement. An "adverse fact" is defined in Wis. Stat. 452.01 (1e) as a condition or occurrence that a competent licensee generally recognizes will significantly adversely affect the value of the property, significantly reduce the structural integrity of improvements to real estate, or present a significant health risk to occupants of the property, or information that indicates that a party to a transaction is not able to or does not intend to meet his or her obligations under a contract or agreement made concerning the transaction.