

FOR LEASE

560 - 670 SF



AVAILABLE RETAIL SPACE

14005 GREENFIELD AVE, NEW BERLIN, WI 53151

DAN MCBRIDE
REAL ESTATE ADVISOR
414.203.3039
dmcbride@boerke.com

MILWAUKEE OFFICE
731 N Jackson Street
Suite 700
Milwaukee, WI 53202

MADISON OFFICE
4602 S. Biltmore
Lane
Suite 112
Madison, WI 53718

Boerke.com

The Boerke Company, Inc. / Independently Owned and Operated / A Member of the Cushman & Wakefield Alliance

Cushman & Wakefield Copyright 2022. No warranty or representation, express or implied, is made to the accuracy or completeness of the information contained herein, and same is submitted subject to errors, omissions, change of price, rental or other conditions, withdrawal without notice, and to any special listing conditions imposed by the property owner(s). As applicable, we make no representation as to the condition of the property (or properties) in question.

FOR LEASE
14005 W GREENFIELD AVE, NEW BERLIN, WI 53151

PROPERTY OVERVIEW

Total Building SF:	44,607 SF
Available SF:	560 SF
	670 SF
Zoning:	M-3
Lot Size:	3.79 Acres
Year Built:	1955
Parking:	219 Surface Stalls
Building Class:	C
Construction:	Masonry
Floors:	1

Features

- Visible to over 26,000 VPD along W Greenfield Ave
- Dedicated turn lane
- Signalized intersection

Economics

Projected Operating Expenses:	\$2.02/SF (NNN)
Lease Rate:	\$12/SF (NNN)

DAN MCBRIDE
REAL ESTATE ADVISOR
414.203.3039
dmcbride@boerke.com



MILWAUKEE OFFICE
731 N Jackson Street
Suite 700
Milwaukee, WI 53202

MADISON OFFICE
4602 S. Biltmore
Lane
Suite 112
Madison, WI 53718

Boerke.com

The Boerke Company, Inc. / Independently Owned and Operated / A Member of the Cushman & Wakefield Alliance

Cushman & Wakefield Copyright 2022. No warranty or representation, express or implied, is made to the accuracy or completeness of the information contained herein, and same is submitted subject to errors, omissions, change of price, rental or other conditions, withdrawal without notice, and to any special listing conditions imposed by the property owner(s). As applicable, we make no representation as to the condition of the property (or properties) in question.

FOR LEASE
14005 W GREENFIELD AVE, NEW BERLIN, WI 53151



14027 SPACE

670 SF



DAN MCBRIDE
REAL ESTATE ADVISOR
414.203.3039
dmcbride@boerke.com

MILWAUKEE OFFICE
731 N Jackson Street
Suite 700
Milwaukee, WI 53202

MADISON OFFICE
4602 S. Biltmore
Lane
Suite 112
Madison, WI 53718

Boerke.com

The Boerke Company, Inc. / Independently Owned and Operated / A Member of the Cushman & Wakefield Alliance

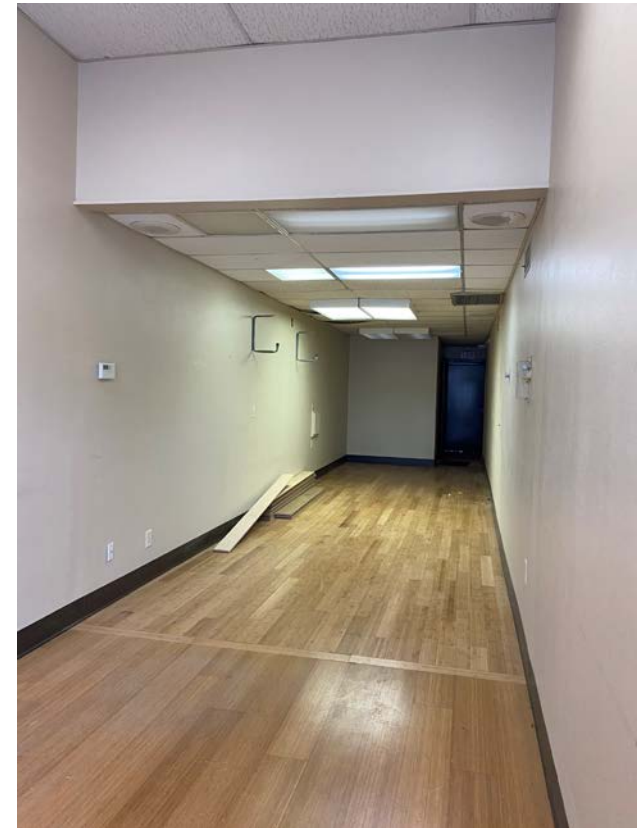
Cushman & Wakefield Copyright 2022. No warranty or representation, express or implied, is made to the accuracy or completeness of the information contained herein, and same is submitted subject to errors, omissions, change of price, rental or other conditions, withdrawal without notice, and to any special listing conditions imposed by the property owner(s). As applicable, we make no representation as to the condition of the property (or properties) in question.

FOR LEASE
14005 W GREENFIELD AVE, NEW BERLIN, WI 53151



14015 SPACE

560 SF



DAN MCBRIDE
REAL ESTATE ADVISOR
414.203.3039
dmcbride@boerke.com

MILWAUKEE OFFICE
731 N Jackson Street
Suite 700
Milwaukee, WI 53202

MADISON OFFICE
4602 S. Biltmore
Lane
Suite 112
Madison, WI 53718

Boerke.com

The Boerke Company, Inc. / Independently Owned and Operated / A Member of the Cushman & Wakefield Alliance

Cushman & Wakefield Copyright 2022. No warranty or representation, express or implied, is made to the accuracy or completeness of the information contained herein, and same is submitted subject to errors, omissions, change of price, rental or other conditions, withdrawal without notice, and to any special listing conditions imposed by the property owner(s). As applicable, we make no representation as to the condition of the property (or properties) in question.

FOR LEASE
14005 W GREENFIELD AVE, NEW BERLIN, WI 53151

AERIAL & AVAILABILITIES



DAN MCBRIDE
REAL ESTATE ADVISOR
414.203.3039
dmcbride@boerke.com

MILWAUKEE OFFICE
731 N Jackson Street
Suite 700
Milwaukee, WI 53202

MADISON OFFICE
4602 S. Biltmore
Lane
Suite 112
Madison, WI 53718

The Boerke Company, Inc. / Independently Owned and Operated / A Member of the Cushman & Wakefield Alliance

Cushman & Wakefield Copyright 2022. No warranty or representation, express or implied, is made to the accuracy or completeness of the information contained herein, and same is submitted subject to errors, omissions, change of price, rental or other conditions, withdrawal without notice, and to any special listing conditions imposed by the property owner(s). As applicable, we make no representation as to the condition of the property (or properties) in question.

Boerke.com

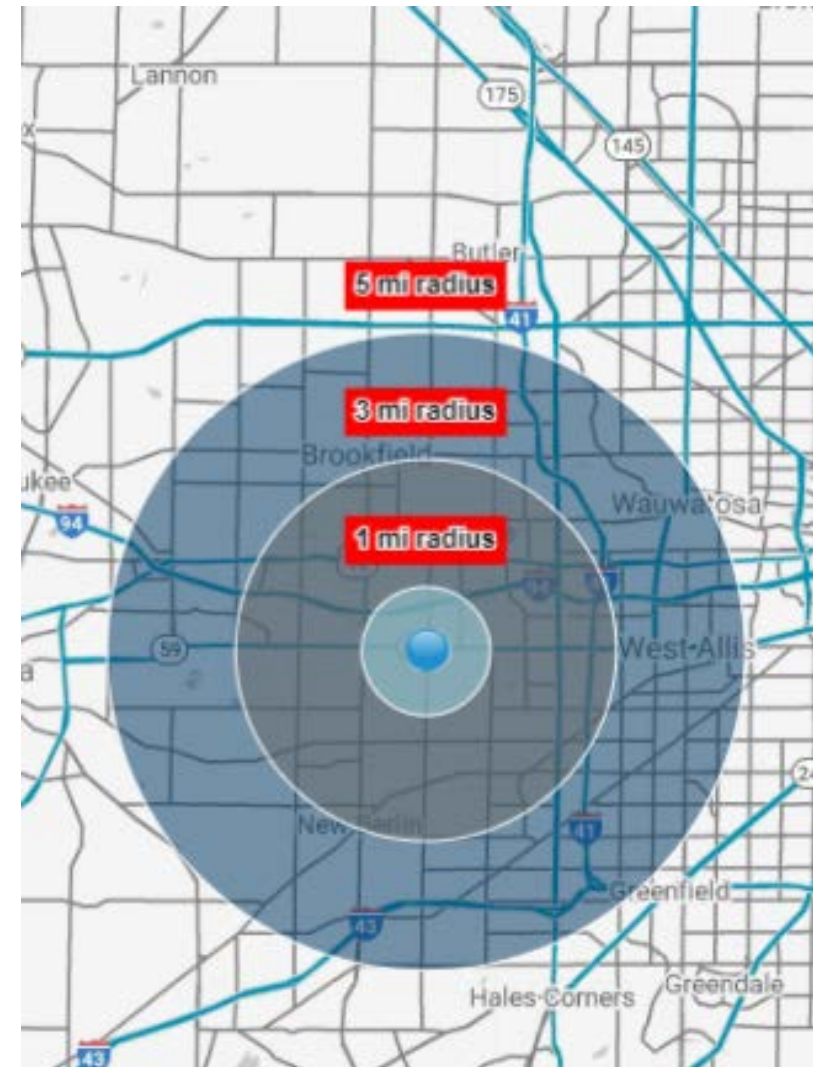
FOR LEASE
14005 W GREENFIELD AVE, NEW BERLIN, WI 53151

DRIVE TIME

MAP

DRIVE TIMES TO KEY AREAS

POPULATION	1 MILE	3 MILES	5 MILES
ESTIMATED POPULATION (2020)	6,477	60,890	192,610
MEDIAN AGE	46.9	44.6	42.6
HOUSEHOLDS	1 MILE	3 MILES	5 MILES
ESTIMATED HOUSEHOLDS (2020)	2,653	27,755	86,155
ESTIMATED AVERAGE HOUSEHOLD INCOME	\$122,545	\$100,775	\$99,573
TOTAL ANNUAL CONSUMER EXPENDITURE	1 MILE	3 MILES	5 MILES
TOTAL RETAIL EXPENDITURE	\$101.94 M	\$920.68 M	\$2.83 B
APPAREL EXPENDITURE	\$7.64 M	\$68.78 M	\$211.88 M
ENTERTAINMENT EXPENDITURE	\$12.5 M	\$111.48 M	\$342.29 M
FOOD & BEVERAGE EXPENDITURE	\$31.36 M	\$285.72 M	\$879.28 M



DAN MCBRIDE
REAL ESTATE ADVISOR
414.203.3039
dmcbride@boerke.com

MILWAUKEE OFFICE
731 N Jackson Street
Suite 700
Milwaukee, WI 53202

MADISON OFFICE
4602 S. Biltmore
Lane
Suite 112
Madison, WI 53718

Boerke.com

The Boerke Company, Inc. / Independently Owned and Operated / A Member of the Cushman & Wakefield Alliance

Cushman & Wakefield Copyright 2022. No warranty or representation, express or implied, is made to the accuracy or completeness of the information contained herein, and same is submitted subject to errors, omissions, change of price, rental or other conditions, withdrawal without notice, and to any special listing conditions imposed by the property owner(s). As applicable, we make no representation as to the condition of the property (or properties) in question.

CONTACT

INFORMATION

DAN MCBRIDE **REAL ESTATE ADVISOR**

dmcbride@boerke.com

414.203.3047

MILWAUKEE OFFICE
731 N Jackson Street
Suite 700
Milwaukee, WI 53202

Boerke.com

MADISON OFFICE
4602 S. Biltmore
Lane
Suite 112
Madison, WI 53718



The Boerke Company, Inc. / Independently Owned and Operated / A Member of the Cushman & Wakefield Alliance

Cushman & Wakefield Copyright 2021. No warranty or representation, express or implied, is made to the accuracy or completeness of the information contained herein, and same is submitted subject to errors, omissions, change of price, rental or other conditions, withdrawal without notice, and to any special listing conditions imposed by the property owner(s). As applicable, we make no representation as to the condition of the property (or properties) in question.

DISCLOSURE TO NON-RESIDENTIAL CUSTOMERS

Prior to negotiating on your behalf the brokerage firm, or an agent associated with the firm, must provide you the following disclosure statement:

DISCLOSURE TO CUSTOMERS

You are a customer of the brokerage firm (hereinafter Firm). The Firm is either an agent of another party in the transaction or a subagent of another firm that is the agent of another party in the transaction. A broker or a salesperson acting on behalf of the Firm may provide brokerage services to you. Whenever the Firm is providing brokerage services to you, the Firm and its brokers and salespersons (hereinafter Agents) owe you, the customer, the following duties:

- (a) The duty to provide brokerage services to you fairly and honestly.
- (b) The duty to exercise reasonable skill and care in providing brokerage services to you.
- (c) The duty to provide you with accurate information about market conditions within a reasonable time if you request it, unless disclosure of the information is prohibited by law.
- (d) The duty to disclose to you in writing certain Material Adverse Facts about a property, unless disclosure of the information is prohibited by law. (See Definition of Material Adverse Facts below).
- (e) The duty to protect your confidentiality. Unless the law requires it, the Firm and its Agents will not disclose your confidential information or the confidential information of other parties.
- (f) The duty to safeguard trust funds and proposals in an objective and unbiased manner and disclose the advantages and disadvantages of the proposals. other property held by the Firm or its Agents.
- (g) The duty, when negotiating, to present contract proposals in an objective and unbiased manner and disclose the advantages and disadvantages of the proposals.
- Please review this information carefully. An Agent of the Firm can answer your questions about brokerage services, but if you need legal advice, tax advice, or a professional home inspection, contact an attorney, tax advisor, or home inspector. This disclosure is required by section 452.135 of the Wisconsin statutes and is for information only. It is a plain-language summary of the duties owed to a customer under section 452.133(1) of the Wisconsin statutes.

CONFIDENTIALITY NOTICE TO CUSTOMERS

The Firm and its Agents will keep confidential any information given to the Firm or its Agents in confidence, or any information obtained by the Firm and its Agents that a reasonable person would want to be kept confidential, unless the information must be disclosed by law or you authorize the Firm to disclose particular information. The Firm and its Agents shall continue to keep the information confidential after the Firm is no longer providing brokerage services to you.

- The following information is required to be disclosed by law:
 1. Material Adverse Facts, as defined in Wis. Stat. § 452.01(5g) (see "Definition of Material Adverse Facts" below).
 2. Any facts known by the Firm or its Agents that contradict any information included in a written inspection report on the property or real estate that is the subject of the transaction.

To ensure that the Firm and its Agents are aware of what specific information you consider confidential, you may list that information below. At a later time, you may also provide the Firm or its Agents with other information you consider to be confidential.

CONFIDENTIAL INFORMATION:

NON- CONFIDENTIAL INFORMATION (the following information may be disclosed by the Firm and its Agents):

(Insert information you authorize to be disclosed, such as financial qualification information.)

DEFINITION OF MATERIAL ADVERSE FACTS

A "Material Adverse Fact" is defined in Wis. Stat. § 452.01(5g) as an Adverse Fact that a party indicates is of such significance, or that is generally recognized by a competent licensee as being of such significance to a reasonable party, that it affects or would affect the party's decision to enter into a contract or agreement concerning a transaction or affects or would affect the party's decision about the terms of such a contract or agreement.

An "Adverse Fact" is defined in Wis. Stat. § 452.01(1e) as a condition or occurrence that a competent licensee generally recognizes will significantly and adversely affect the value of the property, significantly reduce the structural integrity of improvements to real estate, or present a significant health risk to occupants of the property; or information that indicates that a party to a transaction is not able to or does not intend to meet his or her obligations under a contract or agreement made concerning the transaction.

NOTICE ABOUT SEX OFFENDER REGISTRY

You may obtain information about the sex offender registry and persons registered with the registry by contacting the Wisconsin Department of Corrections on the Internet at <http://www.doc.wi.gov> or by telephone at 608-240-5830.